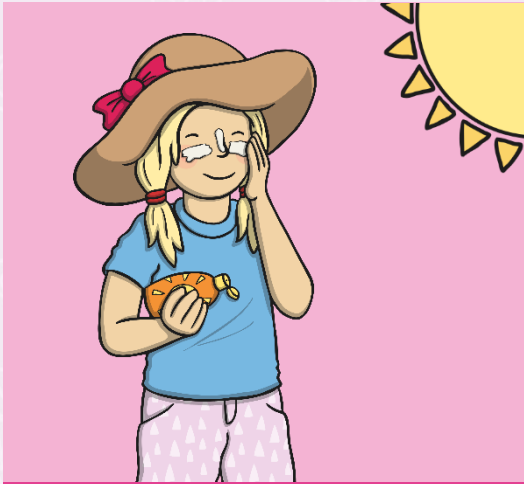


The Suffixes -less and -ly



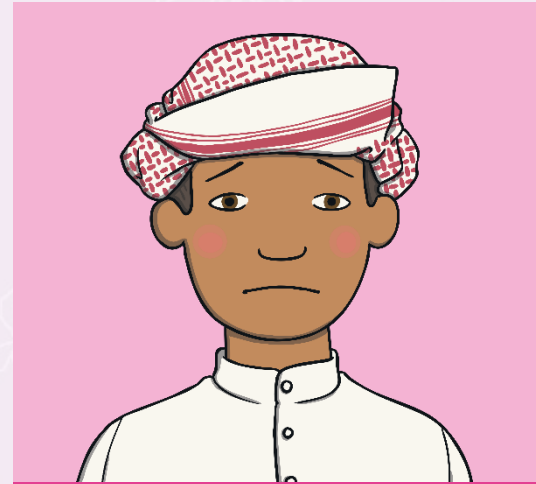
We have looked at adding the suffixes -ment, -ness and -ful . . .



careful



happiness



sadness

. . .and have learnt the rule for adding a suffix to words of more than one syllable that end in -y with a consonant before it.

To add a suffix to a word of more than one syllable ending in -y with a consonant before it, change the 'y' to 'i' and add the ending.

badly
hopeless

→ penniless

→ happily

lovely
joyless
slowly
quickly
careless
fearless

To add a suffix to a word of more than one syllable ending in **-y** with a consonant before it, change the '**y**' to '**i**' and add the ending.

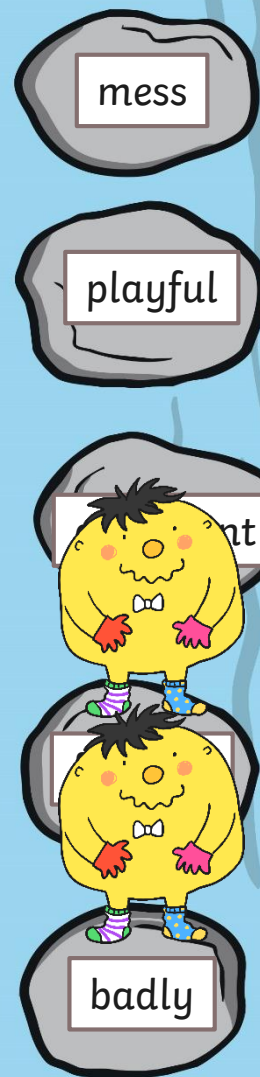
Look at these words. They all end in **-ly** or **-less**.
Does the same rule apply here?

Yes!

No!

Write the words which follow the rule on a whiteboard.

Help Mr Whoops get across the river by only stepping on the stones with words with the suffixes -ly or -less.



One of the spelling words is missing from the stepping stones.
Unscramble the letters and write a sentence with the word in.

e s l p e n s n i

Check

My brother said he
was **penniless** but
actually he had
£1.25 in his pocket.

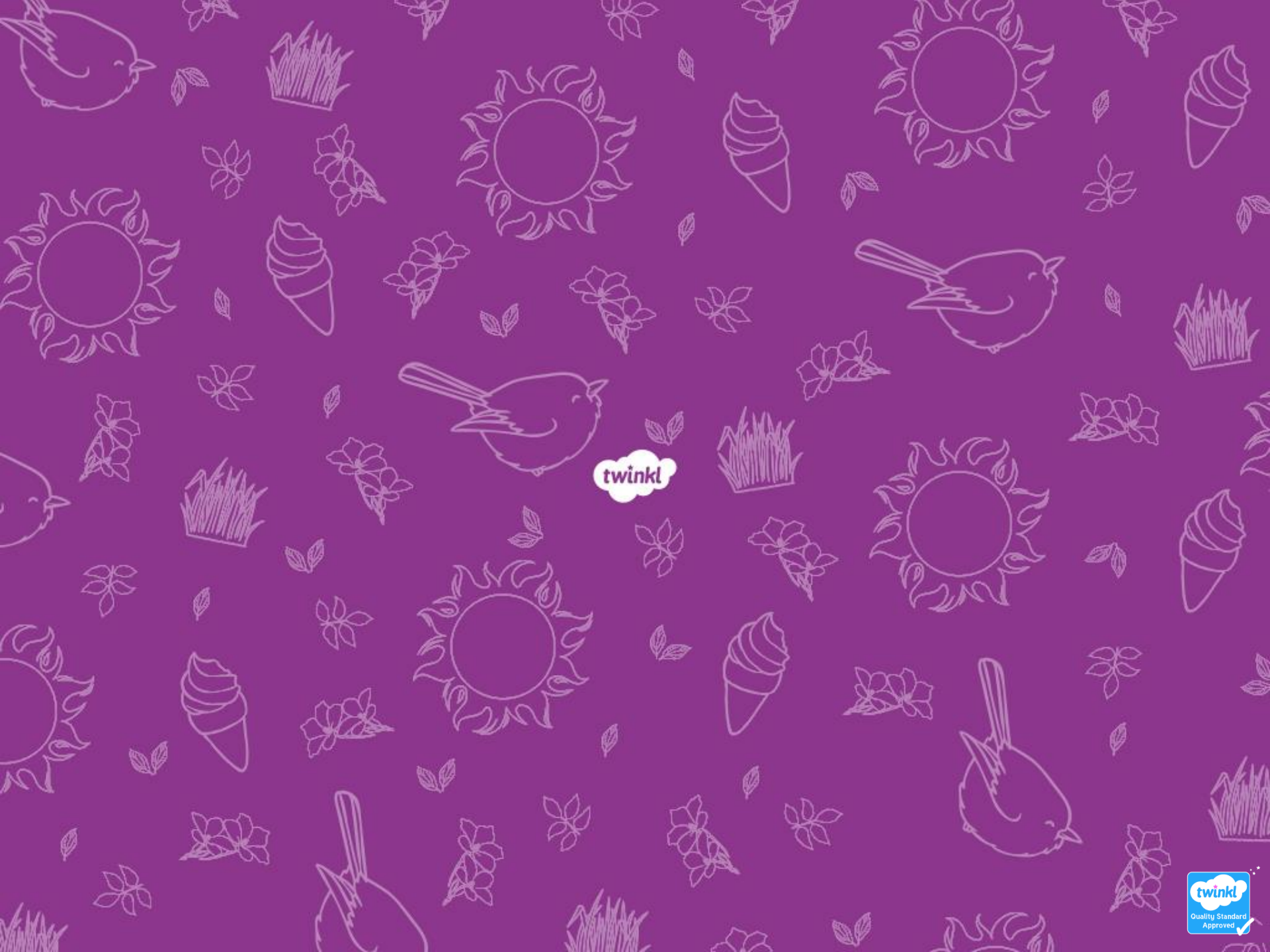
Here are this week's spellings to practise.

badly
hopeless
penniless
happily
lovely

joyless
slowly
quickly
careless
fearless

Work hard to learn
them and the rule we
have looked at today.





twinkl